

Recovery mode for Yealink Dect Phones

This document shows how to use recovery mode to update the base.

Recovery mode update

Summary: You may need to follow a recovery mode update when the phone cannot well boot up (only the power light can be turned on). Briefly, the procedure is to prepare a TFTP server (tftpd32.exe), put the wanted firmware to the TFTP server and rename the firmware to W52P.rom and then enable the phone to update the firmware via the TFTP server.

Operation Procedure:

Firstly, you can download the tftpd32 application and files from below link:

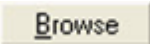
ftp://888VOIP:6br6pcyl@ftp.yealink.com/DECT/Others/tftpd32.450_bak.rar

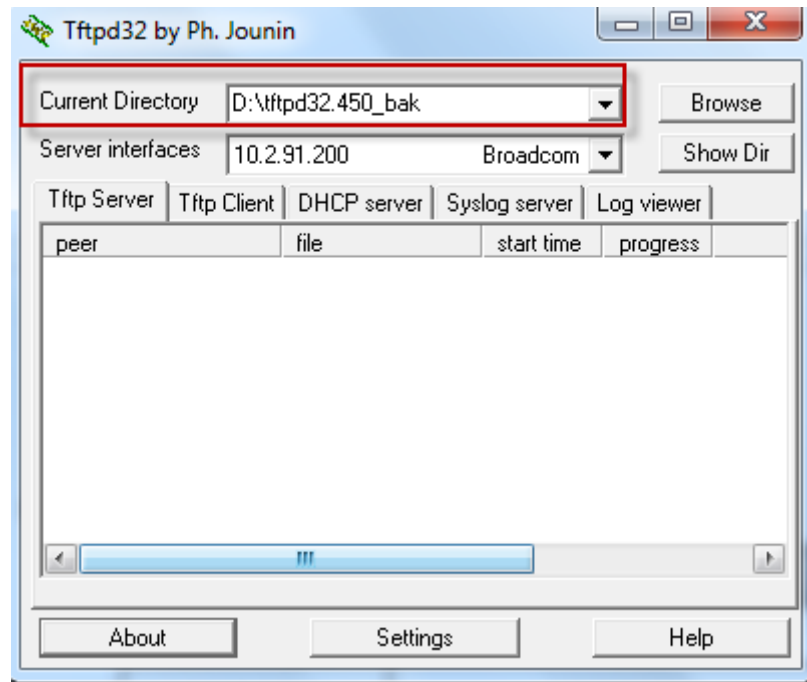
It includes the file as shown in the figure, which are indispensable.

For the W52P.rom, it is the base version (25.x.x.x). in the link it is

25.40.76.6.rom, you can use other base version as W52P.rom

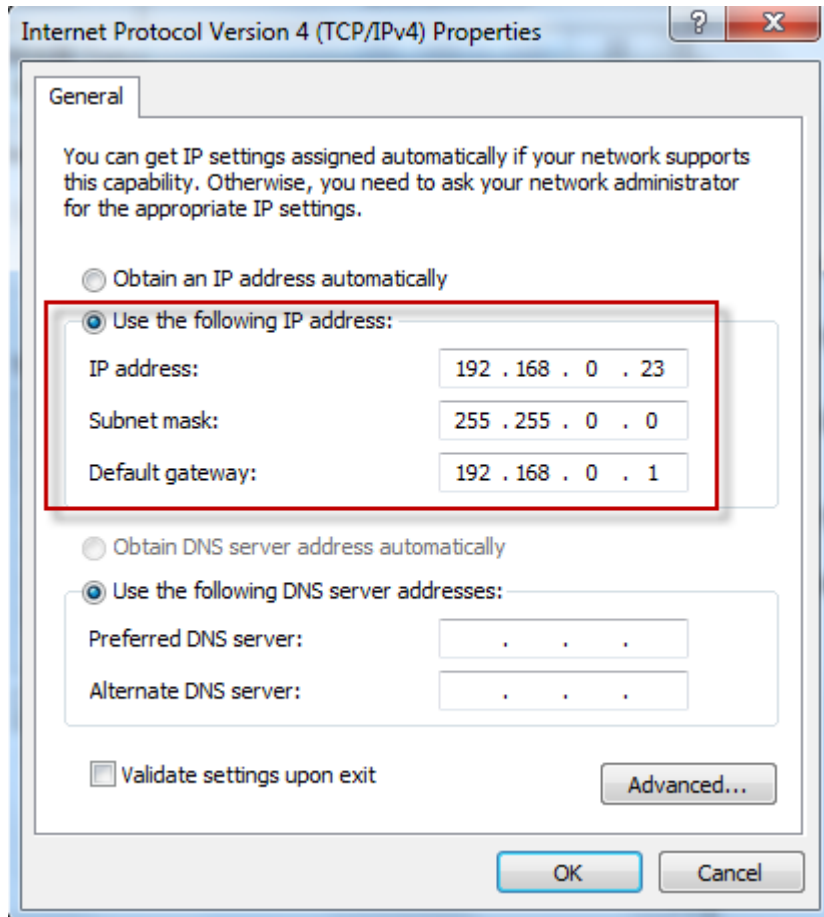




1. To prepare a firmware of base for update, you must rename the file name of the base version as W52P.rom.
2. Double click the tftpd32.exe to start the application as the TFTP server.
3. Click the button  to locate the TFTP root directory where you unzip the files. For example, the files are unzipped in local disk (D:).



4. Configure the local IP address in PC. The PC IP address must be configured the value as below. Then the base will get the DECT IP (192.168.0.100) automatically.

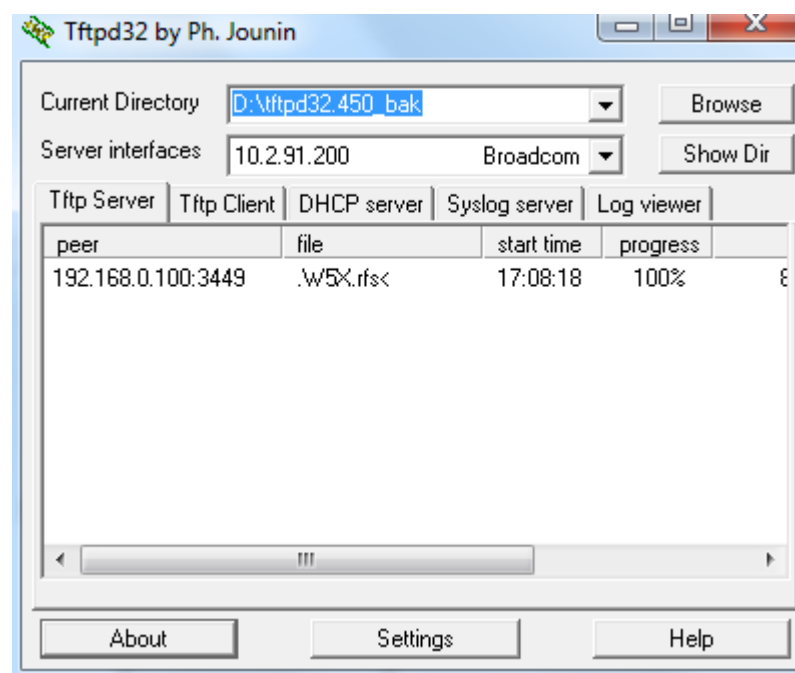
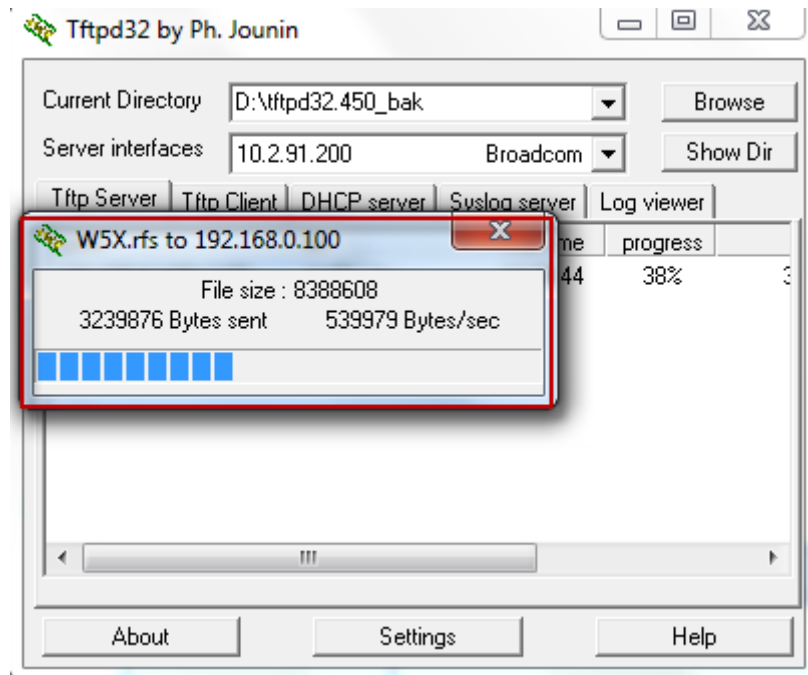
Parameter	Default Value
Gate Way IP	192.168.0.1
Net Mask	255.255.0.0
DECT IP	192.168.0.100
TFTP Server IP	192.168.0.23

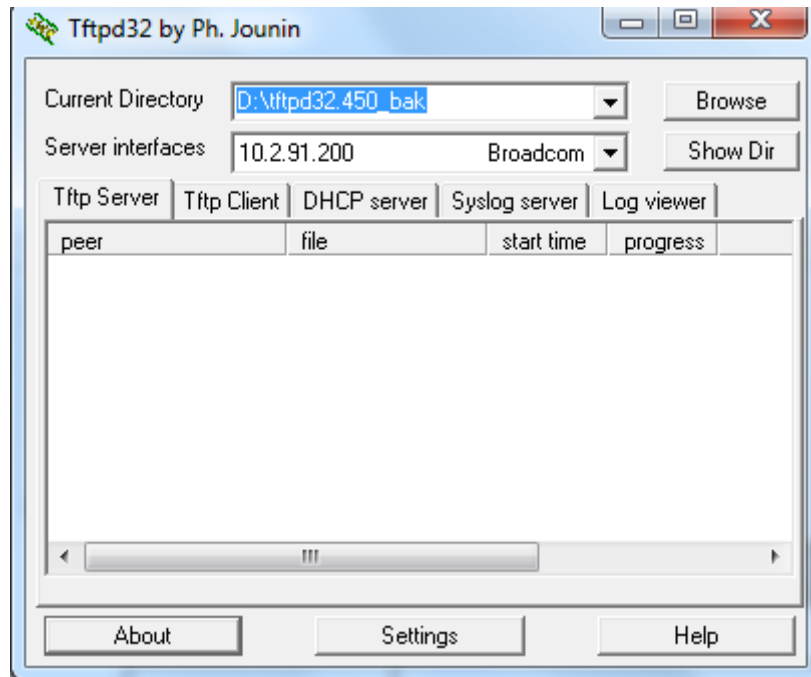


5. Long press  on the base and reconnect the power adapter to trigger the recovery mode. In the meantime, you will see the lights on base LEDs turn by turn (-> power led-> network led-> phone led). When these LEDs are lighting, release  and the base will automatically enter the status of recovery mode update.

You can pay attention to the log of TFTP server as shown in the below figures.

Make sure that Base has sent request for the files.





6. Try to open the WEB UI with the IP address 192.168.0.100 via PC. Check the firmware version in Status. For example like below

Yealink W52P Logout

Status Account Network Phone Contacts Security

Status

Handset&VoIP

Version ?

Firmware Version	25.40.0.15
Hardware Version	25.0.0.0.0.0.0

Network ?

Internet Port Type	DHCP
IP Address	10.2.20.118
Gateway	10.2.20.254
Primary DNS	192.168.1.167
Secondary DNS	192.168.1.166
Subnet Mask	255.255.255.0
MAC Address	00156544b47d
Link Status	Connected
PC IP Address	
DHCP Server Status(PC)	Stoped
Uptime	1 days 7:9

NOTE

Version:
It shows the version of firmware.

Network:
It shows the information of WAN port.